

State of Wyoming Corner Record

(In compliance with the *CORNER PERPETUATION AND FILING ACT*, Wyoming Statutes, 1997 Section 33-29-140 et. seq., and the Rules and Regulations of the Board of Professional Engineers and Professional Land Surveyors)

Reverse side of this form may be used if more space is needed.

Record of original survey and citation of source of historical information (if corner is lost or obliterated). Description of corner monumentation evidence found and/or monument and accessories established to perpetuate the location of this corner. Sketch of relative location of monument, accessories, and reference points with course and distance to adjacent corner(s) (if determined in this survey). Method and rationale for reestablishment of lost or obliterated corner.

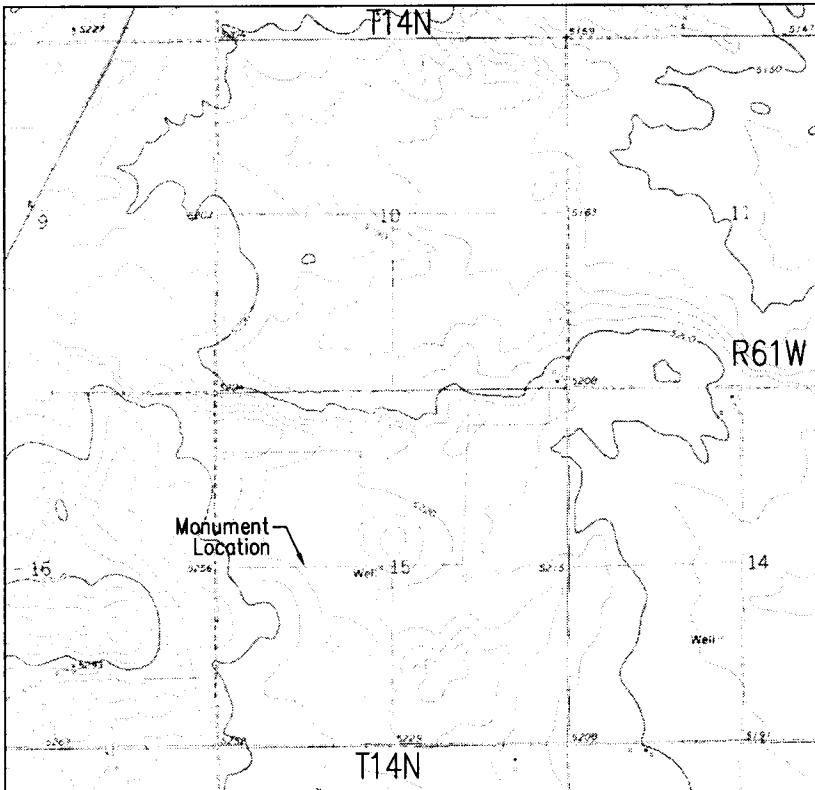
FOUND: NOTHING



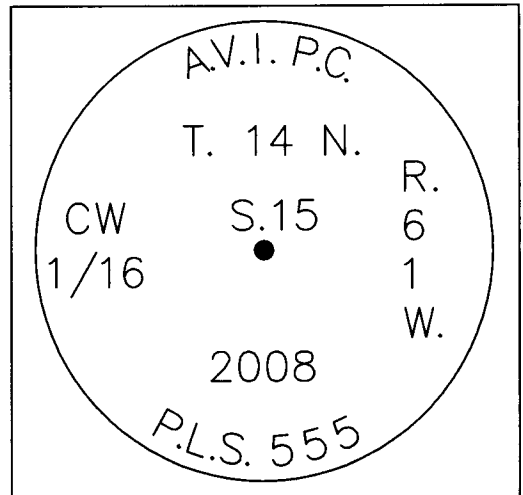
RECORDED 5/22/2008 AT 11:40 AM REC# 500542 BK# 2060 PG# 1268
DEBRA K. LATHROP, CLERK OF LARAMIE COUNTY, WY PAGE 1 OF 1

SET: 3 1/4" ALUMINUM CAP ON
3/4" X 30" REBAR

NOTE:
FOR ADDITIONAL INFORMATION ON THIS
CORNER, SEE A MAP OF SURVEY RECORDED
AT BOOK 2048, PAGE 940; FILED IN MAP
CABINET SURV 4 SLOT 53, OF THE RECORDS
OF THE LARAMIE COUNTY CLERK



Monument location



Monument Inscription

Date of Field Work: 3-21-08

Office Reference: 2923

Cross Index Plat

	1	2	3	4	5	6	7	8	9	10	11	12	13	14	15	16	17	18	19	20	21	22	23	24	25	
A		+	+	+	+	+	+	+	+	+	+	+	+	+	+	+	+	+	+	+	+	+	+	+	+	A
B		+	+	+	+	+	+	+	+	+	+	+	+	+	+	+	+	+	+	+	+	+	+	+	+	B
C			6			5				4				3						2					1	C
D			+			+				+				+						+					+	D
E			+			+				+				+						+					+	E
F			+			+				+				+						+					+	F
G																										G
H																										H
J																										J
K																										K
L																										L
M																										M
N																										N
O																										O
P																										P
Q																										Q
R																										R
S																										S
T																										T
U																										U
V																										V
W																										W
X																										X
Y																										Y
Z																										Z
	1	2	3	4	5	6	7	8	9	10	11	12	13	14	15	16	17	18	19	20	21	22	23	24	25	

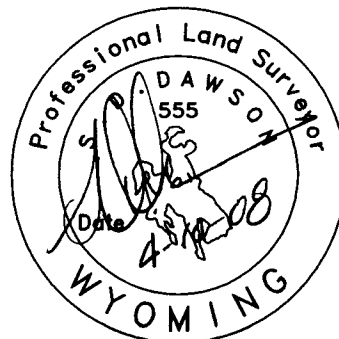
Firm/Agency, Address

This corner record was prepared by me or under my direction and supervision.

AVI P.C.
2035 WESTLAND ROAD
CHEYENNE, WY. 82001

SEAL & SIGNATURE

Telephone Number: 307-637-6017



Corner Name CENTER WEST 1/16 Section 15, T 14 N, R 61 W, 6th P.M. Cross-Index No.: L-14
County: Laramie Wyoming